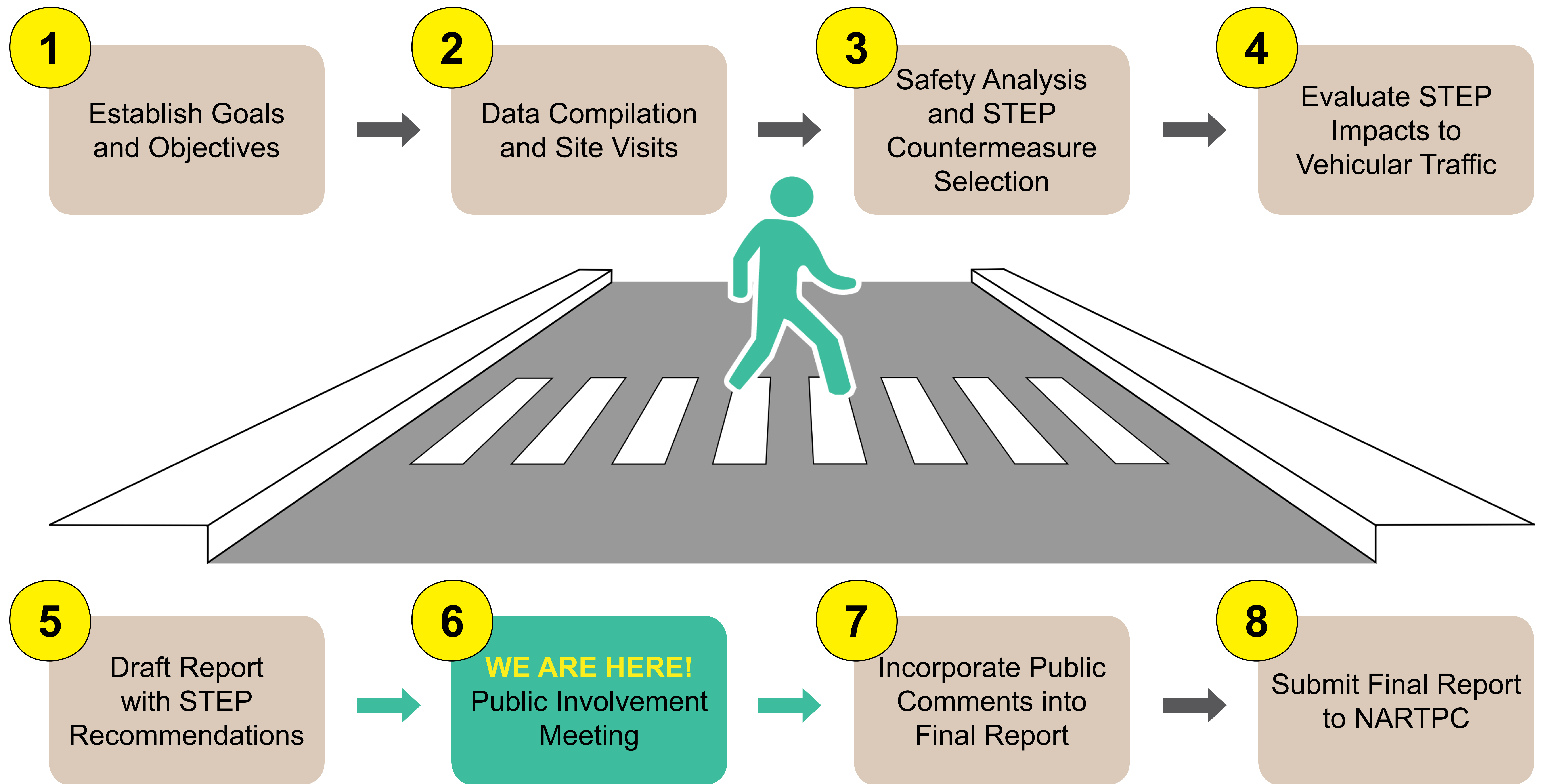


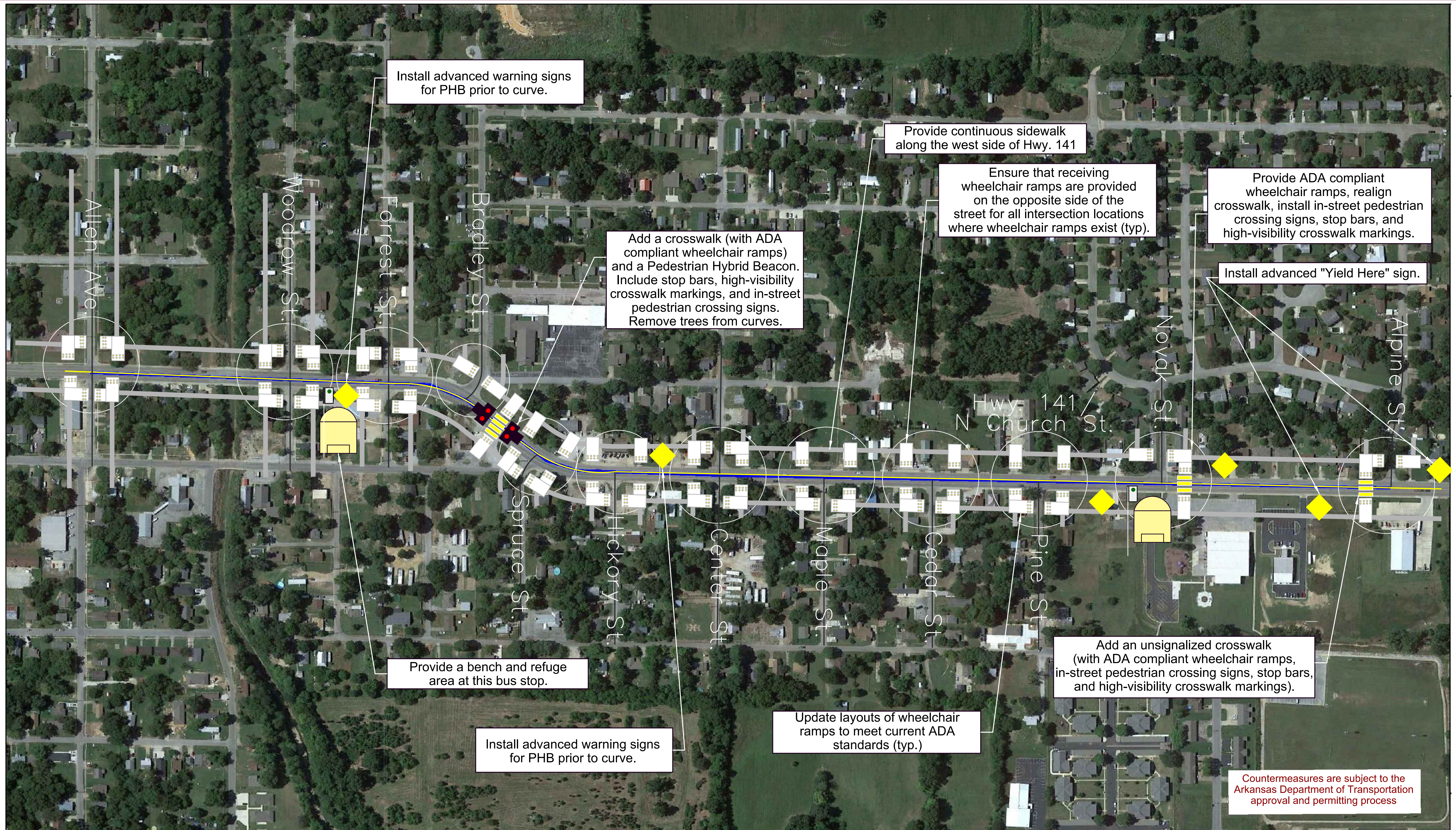
STEP Study Process

Highway 141 Step Innovation Study (January - December 2019)



Jonesboro STEP Innovation Study

Highway 141 Conceptual Layout of Recommended Countermeasures



LEGEND:

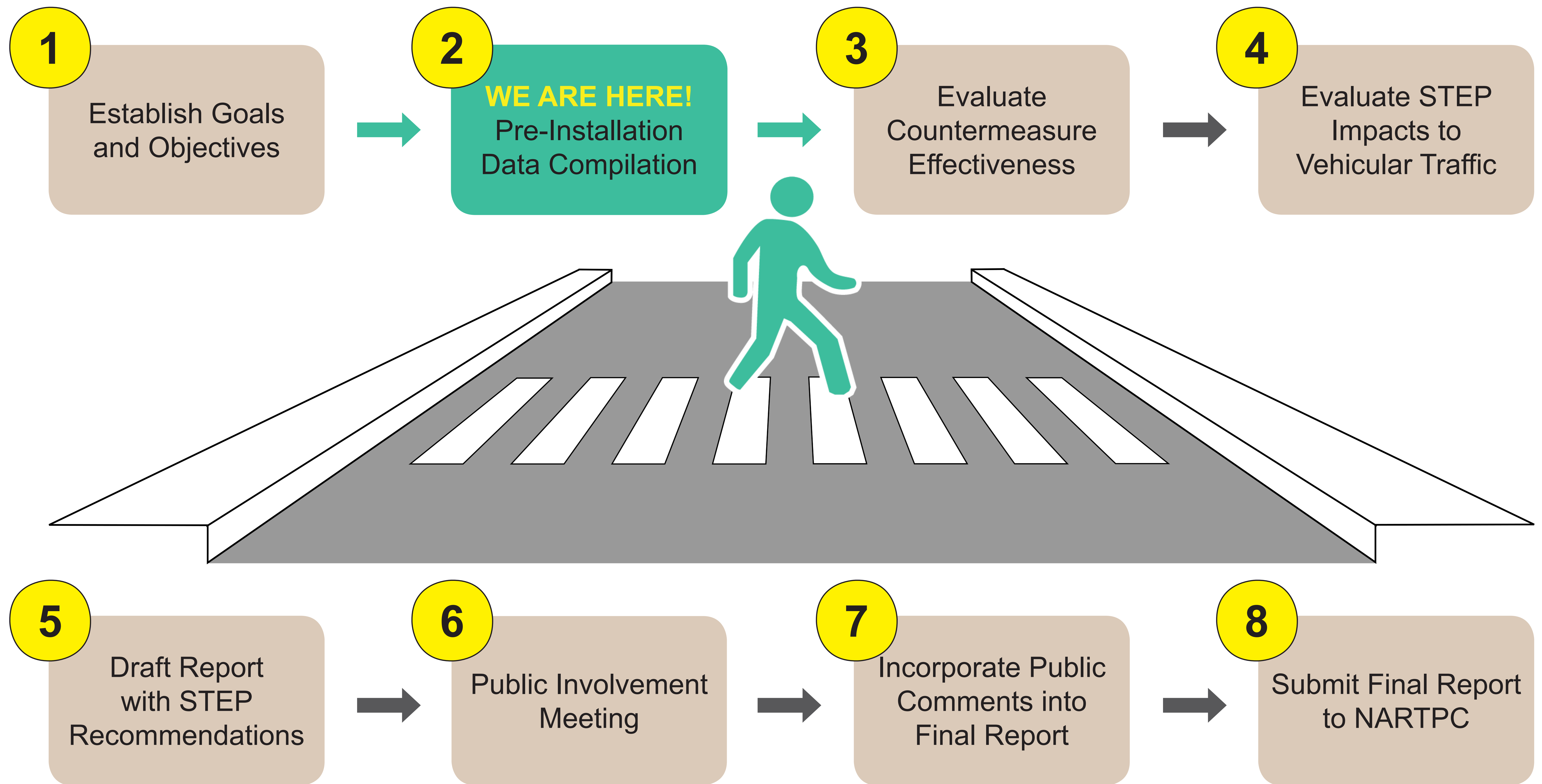
Sidewalk	Wheelchair Ramp	Bus Stop	Intersection
Hwy. 141	Crosswalk	Pedestrian Hybrid Beacon	Advanced Warning Sign
Cross Street	Bench and Shelter		

Additional Improvements:
 - Maintain adequate widths, slopes, and quality of pavement for all sidewalks and wheelchair ramps.
 - Provide additional/improved lighting at all crosswalk locations.

* Countermeasures are subject to the Arkansas Department of Transportation approval and permitting process.

STEP Study Process

Highway 91 STEP Innovation Study (February 2019 - January 2020)



Jonesboro STEP Innovation Study

Highway 91 Trial Pedestrian Crossing



Jonesboro STEP Innovation Study



**NORTHEAST ARKANSAS REGIONAL TRANSPORTATION PLANNING COMMISSION
COMMENT FORM**

**SAFE TRANSPORTATION FOR EVERY PEDESTRIAN (STEP) INNOVATION STUDY
(HWY. 141 & HWY. 91 IN JONESBORO)**

**Parker Park Community Center
1506 N. Church Street, Jonesboro, AR
4:30 – 7:30 p.m.
Tuesday, July 23, 2019**

Make your comments on this form and leave it with NARTPC or Garver personnel at the meeting or mail it by Wednesday, August 7, 2019 to Garver, Attn: Jon Hetzel, 4701 Northshore Drive, North Little Rock, AR 72018 or email PublicInvolvement@GarverUSA.com

Yes **No**
 Do you regularly cross **Highway 141** (North Church Street) as a pedestrian? If yes, please explain where you cross. _____

Yes **No**
 Do you feel that there are adequate gaps in traffic flow to cross **Highway 141** safely? _____

Yes **No**
 Would you cross **Highway 141**, or cross more often, if there was a protective crossing requiring vehicles to stop for pedestrians? _____

Yes **No**
 Would you be willing to walk up to 300 feet (length of a football field) out of your way to use a safer designated crossing on **Highway 141**? _____

Yes **No**
 Do you regularly travel on **Highway 141** by passenger vehicle? If yes, please explain where you see pedestrians trying to cross. _____

(Highway 91 Questions Listed on Back)

Yes

No

Do you regularly cross **Highway 91** (East Johnson Avenue) as a pedestrian at State Street near the Citgo gas station? If yes, please explain where you walk to/from _____

Yes

No

Do you feel that there are adequate gaps in traffic flow to cross **Highway 91** safely? _____

Yes

No

Would you cross **Highway 91**, or cross more often, if there was a protective crossing requiring vehicles to stop for pedestrians? _____

Yes

No

Would you be willing to walk up to 300 feet (length of a football field) out of your way to use a safer designated crossing on **Highway 91**? _____

Yes

No

Do you regularly travel on **Highway 91** by passenger vehicle? If yes, please explain where you see pedestrians trying to cross. _____

Please make any additional comments here. _____

Contact Information (Optional)

Name (Please Print): _____

Address: _____

Phone: (____) ____--____

E-mail: _____